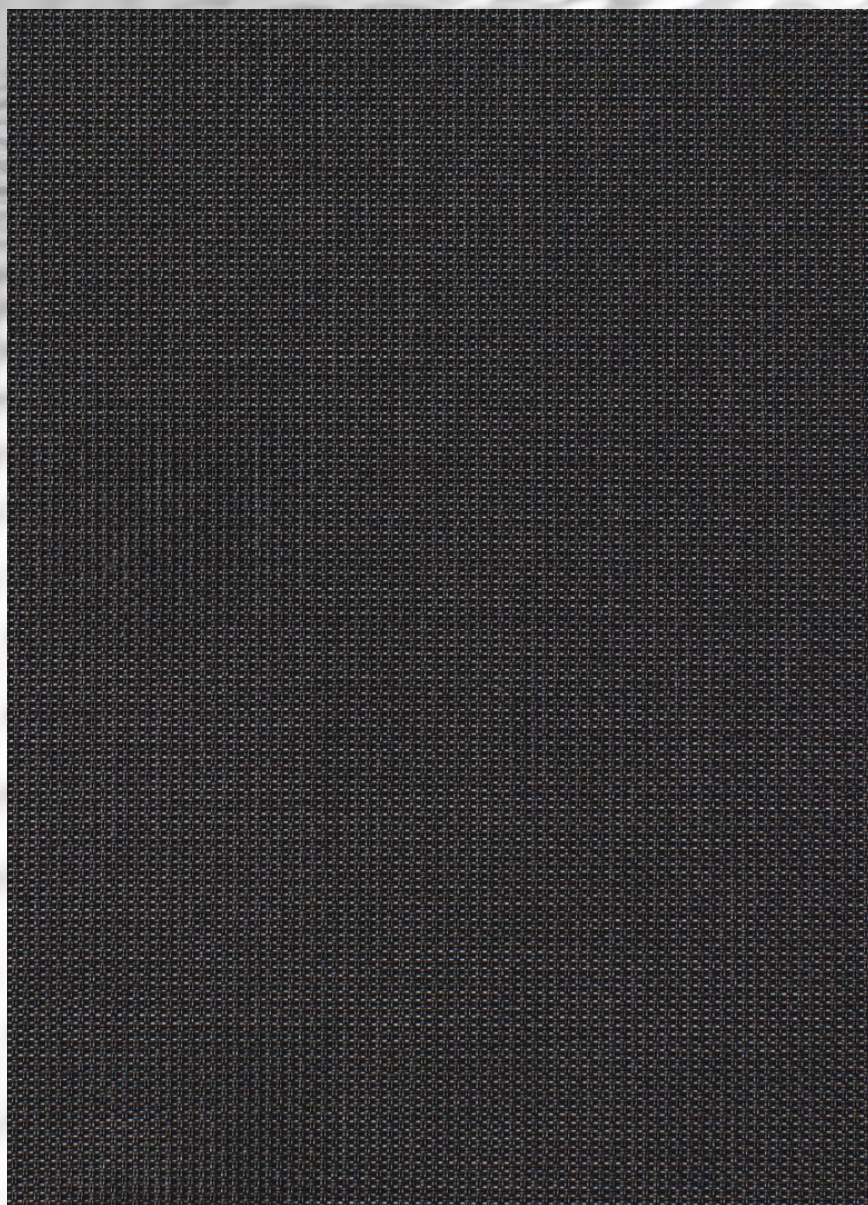




TEXTILENE® 95
BRAND FABRIC



Due to the technical limitations of digital cameras and inconsistencies of display monitors, the characteristics and colors of the fabrics seen on your screen may be slightly different than the actual product.

TEXTILENE® 95 is a durable synthetic fabric made of PVC coated polyester. Designed to reduce heat transfer and solar glare, our fabric can lower overall energy cost and protect indoor furnishings. Flame and fade resistant, it is an excellent choice for a variety of indoor or outdoor uses.

***Custom colors and widths available. Minimum order of 1000 yds. Upcharges may apply. ** Available in 33.3 yd rolls.**

Specifications

REACH Compliant - Regulated by Registration, Evaluation, Authorization and Restriction of Chemicals. REACH places greater responsibility on industry to manage the risks that chemicals may pose to human health and the environment.

Children's Toy Act - Does not contain harmful phthalates listed under Section 108 of the Consumer Product Safety Improvement Act of 2008 (CPSIA).

Fire Classification - Passes California U.S. Title 19 (small scale), NFPA701-2015 TM#1 (small scale), NFPA 101 (Class A Rating), UBC (Class 1), BS 5867 2008 Part 2 Type B Performance, NFPA 701 TM #2 (large scale), and CAN/ULC-S 109-03 (large and small scale).

Environmental Certification - GREENGUARD gold certified. Acceptable for use in environments such as schools and healthcare facilities. Complies with requirements of the State of California's Department of Public Health "Standard Method for Testing and Evaluation of Volatile Organic Chemical Emissions from Indoor Sources Using Environmental Chambers, Version 1.1 (2010)" (also known as California Section 01350).

RoHS Compliant - Free of Lead (Pb), Cadmium (Cd), Mercury (Hg), Hexavalent chromium (Hex-Cr), Polybrominated biphenyls (PBB), and Polybrominated diphenyl ethers (PBDE).

Bacteria and Fungal Resistance - Passes ASTM E 2180, ASTM G21. Includes specially formulated antimicrobial.



REACH COMPLIANCE



FLAME RESISTANT



GREENGUARD GOLD



LEAD FREE



PRINTABLE



RoHS COMPLIANT



MADE IN USA



LIMITED WARRANTY

Technical Data

Item Number: T18A2S, T18A2T

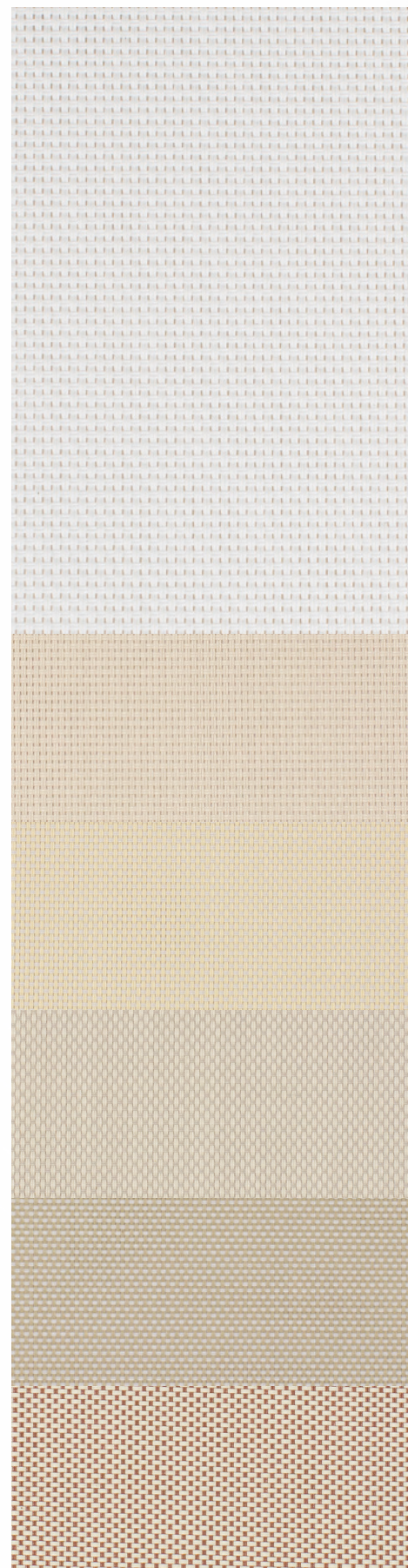
Product Description: A woven fabric using .018" diameter vinyl coated 500 denier polyester core yarns woven in the warp and fill.

Attribute	ASTM	Warp	Fill	Typical
Construction, end/inch	D3775-12	36.0 ±0.5	26.0 ±0.5	
Weight, oz/yd ²	D3776-09			17.8
Weight, g/m ²	D3776-09			603.5
Tensile Strength (grab), lbf / daN	D5034-09	569.8 / 253.5	467.9 / 208.1	
Tensile Strength (strip), lbf / daN	D5035-11	314.9 / 140.1	224.1 / 99.7	
Tear Strength (trapezoidal), lbf / daN	D5733	87.6 / 39.0	57.4 / 25.5	
Elongation, %	D5035-11	32.3	24.9	
Abrasion Resistance <small>(CS10/500 cycles/ with no added weight)</small>	D3884-09		No Exposure of Core Yarn	
Flammability Rating			CA Title 19 & NFPA 701	
Weatherability, 1200 hours	G154		Trace Discoloration	
Mildew Resistance	G21-13		No growth	
Thickness, inches/mm	D1777-96			0.037"/0.9398 mm

The above results are a representation of real data from single test samples. Presently no specification is incorporated.

Profile	Total Solar			Visible			Insulating Glass		
	Ts	Rs	As	Ts	Rs	As	1/2" Clr.	1" Clr.	1" HA
0	0.08	0.03	0.89	0.12	0.03	0.85	0.18	0.14	0.13
45	0.05	0.04	0.91	0.08	0.04	0.88	0.15	0.12	0.11

DISTRIBUTED OR MANUFACTURED BY:



Pure White
T18A2S009 x 126"

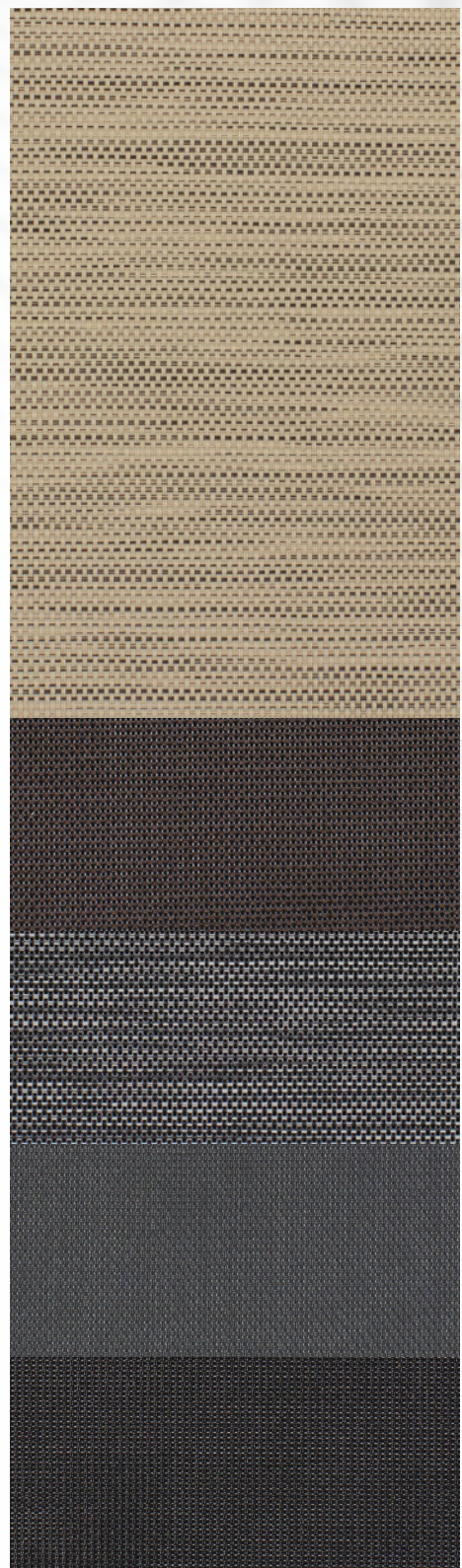
Quartz
T18A2S007 x 126"

Putty
T18A2T019 x 126"

Pewter
T18A2T021 x 126"

Mushroom
T18A2T018 x 126"

Almond Brown
T18A2T022 x 126"



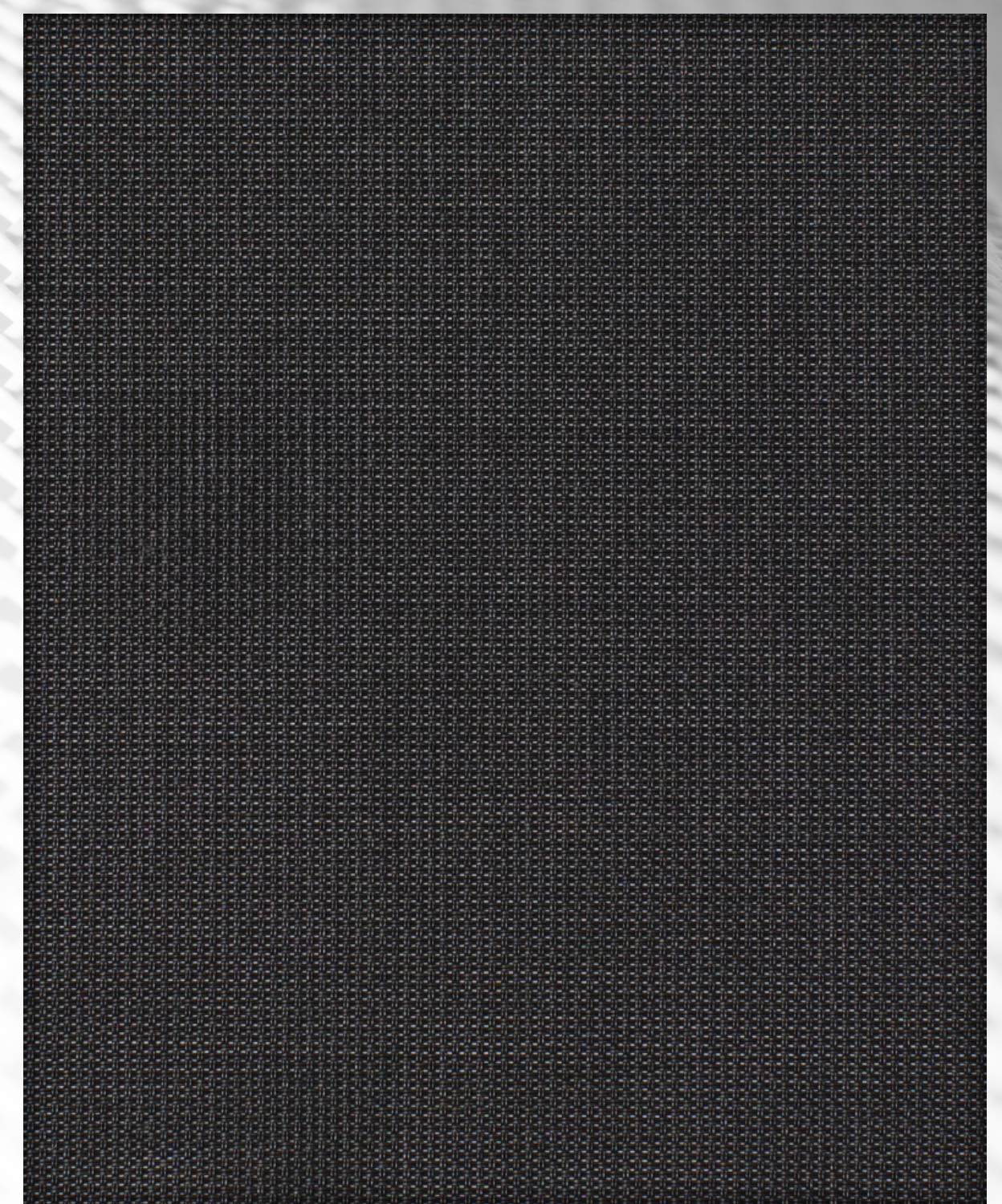
Tumbleweed
T18A2T023 x 126"

Tobacco Leaf
T18A2T020 x 126"

Carbon Texture
T18A2T024 x 126"

Graphite
T18A2S008 x 126"

Galaxy Black
T18A2S006 x 126"



Galaxy Black
T18A2S006 x 126"

Due to the technical limitations of digital cameras and inconsistencies of display monitors, the characteristics and colors of the fabrics seen on your screen may be slightly different than the actual product.