

# PHIFER

EXTERIOR SUN CONTROL  
FABRIC

SUPER SOLAR  
SCREENING<sup>+</sup>

---

WEAVING  
EXCELLENCE  
WITH  
INNOVATION



# Super Solar Screening+

BY PHIFER

SOLAR OPTICAL PROPERTIES				SHGC/G VALUE g-tot (glass & blind)					
				SINGLE			INSULATING		
Color	TS	RS	AS	1/8 CL	1/4 CL	1/4 HA	1/2 CL	1 CL	1 HA
<b>SUPER SOLAR SCREENING+ 30 Degree Profile Angle • Fabrics Installed Externally</b>									
Charcoal	10	7	83	0.17	0.17	0.16	0.14	0.14	0.12
Bronze	15	9	76	0.21	0.21	0.20	0.17	0.16	0.15
<b>SUPER SOLAR SCREENING+ 75 Degree Profile Angle • Fabrics Installed Externally</b>									
Charcoal	3	8	89	0.10	0.10	0.10	0.07	0.07	0.07
Bronze	6	13	81	0.11	0.11	0.11	0.08	0.08	0.08



PRODUCT CERTIFIED FOR  
LOW CHEMICAL EMISSIONS  
UL.COM/GG  
UL 2818



MIF Seal of Approval



TS = Solar Transmittance  
RS = Solar Reflectance  
AS = Solar Absorptance  
TV = Visual Transmittance

SHGC = Solar Heat Gain Coefficient

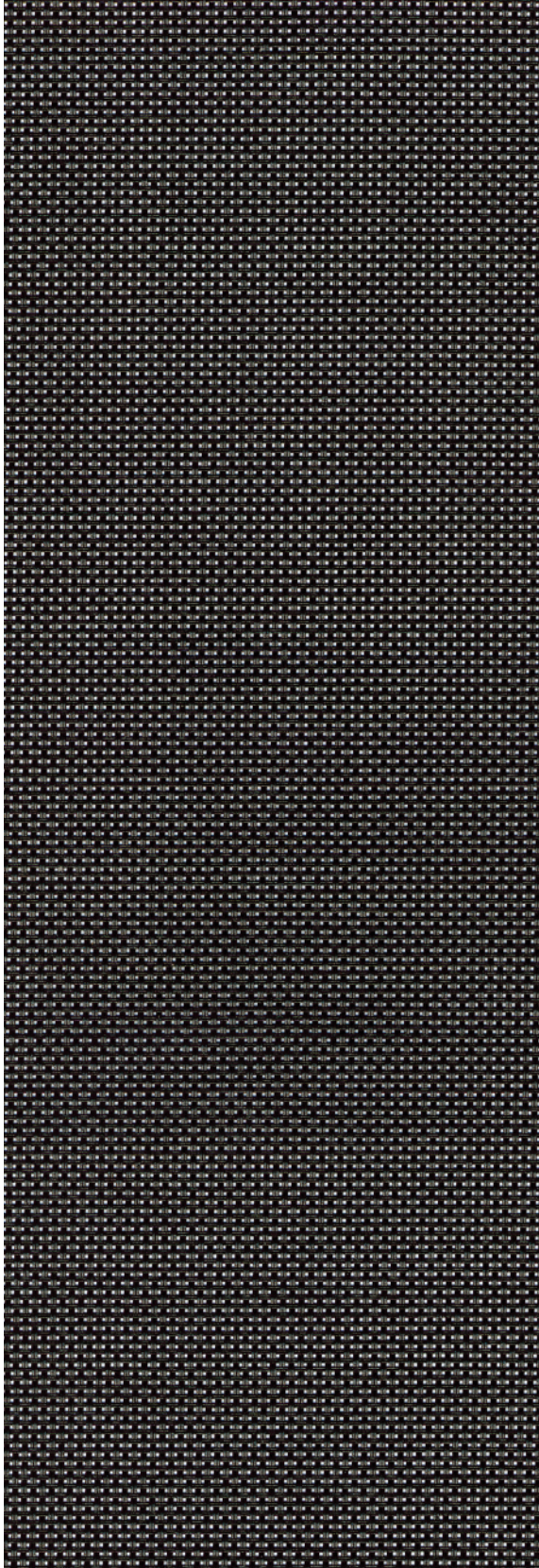
- 1/8 CL = 1/8" Clear Glass
- 1/4 CL = 1/4" Clear Glass
- 1/4 HA = 1/4" Heat Absorbing Glass
- 1/2 CL = 1/2" Insulating Clear Glass
- 1 CL = 1" Insulating Clear Glass
- 1 HA = 1" Insulating Heat Absorbing Glass

The solar optical properties are used to calculate the solar heat gain coefficient (SHGC). The SHGC represents the percentage of solar heat gain that is transmitted to the interior through the glass and shading system. Dark colors provide maximum glare reduction and visibility.

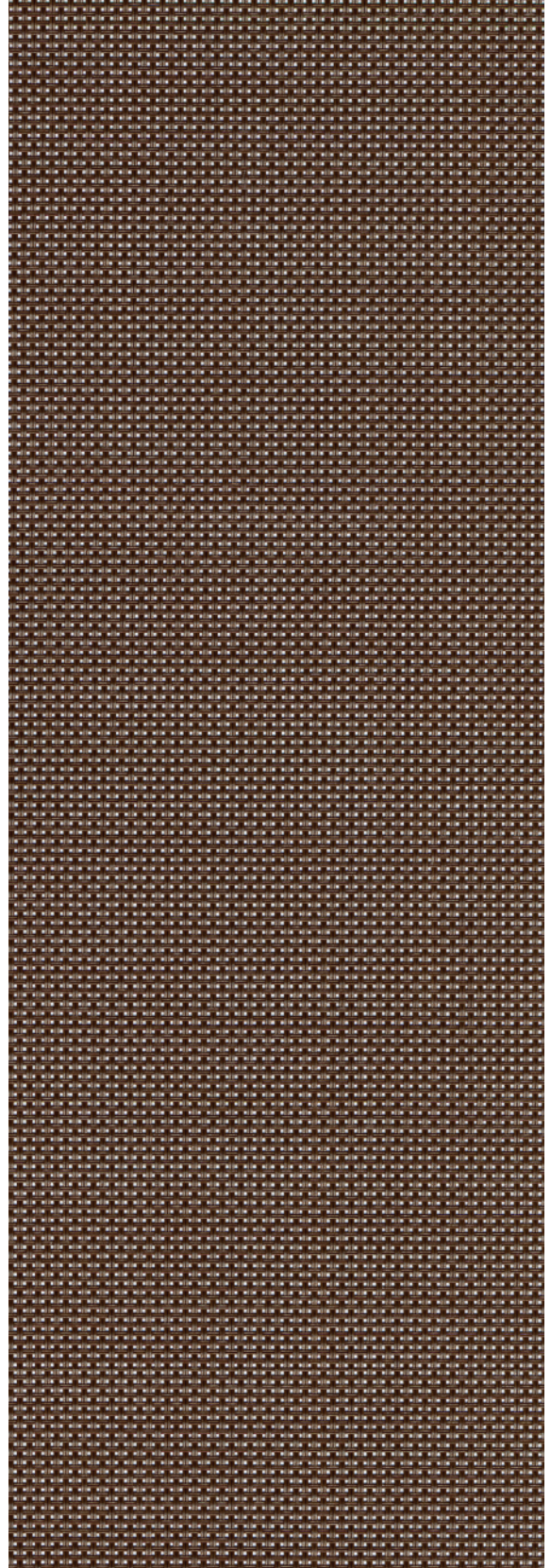
For additional performance values, test references and technical definitions visit us at [www.phifer.com](http://www.phifer.com).



## Charcoal



## Bronze



\*Colors may vary based on individual computer settings and should only be used for general reference.



# SUPER SOLAR SCREENING+ SPECIFICATIONS

Phifer Super Solar Screening + offers the ultimate in shading protection by blocking up to 90% of the sun's heat. This vinyl-coated fiberglass fabric also improves daytime privacy while offering excellent outward visibility. Phifer Super Solar Screening works whether windows are open or closed. It keeps carpets and draperies from fading, as well as helps save energy.

<b>ENVIRONMENTAL CERTIFICATION</b>	GREENGUARD GREENGUARD Gold Certified to these standards for low chemical emissions into indoor air during product usage
<b>LEAD FREE</b>	RoHS/Directive 2002/95/EC ANSI/WCMA A 100.1-2007 for lead content US Consumer Product Safety Commission Section 101 REACH (EC 1907/2006) compliant
<b>WARRANTY</b>	10-year exterior
<b>UV PROTECTION</b>	Seal of Approval by the Melanoma International Foundation (MIF) for effectiveness in preventing sun damage to the skin or eyes

## SUPER SOLAR+

---

<b>WIDTHS</b>	<i>Charcoal</i> 36", 48", 60" and 84" 91.4 cm, 121.9 cm, 152.4 cm and 213.4 cm
	<i>Bronze</i> 36", 48", and 84" 91.4 cm, 121.9 cm and 213.4 cm
<b>ROLL LENGTH</b>	100 Linear Feet 30.48 m
<b>COMPOSITION</b>	36% Fiberglass 64% Vinyl on Fiberglass
<b>MESH WEIGHT</b>	10.0 oz/yd <sup>2</sup> 283.5 g/m <sup>2</sup>
<b>FABRIC THICKNESS</b>	0.018 in 0.457 mm
<b>OPENNESS FACTOR</b>	Approximately 10%
<b>UV BLOCKAGE</b>	Approximately 90%
<b>BREAKING STRENGTH (LBS)</b>	290 Warp, 215 Fill
<b>STIFFNESS (MG)</b>	200 Warp, 250 Fill



P. O. Box 1700 • Tuscaloosa, Alabama 35403 -1700 USA  
Phone: 205.345.2120 • FAX: 205.391.0799  
Toll Free USA/Canada: 1.800.221.5497  
phifer.com • ISO Registered



™ UL, the UL logos and the UL mark are trademarks of UL LLC.  
© PHIFER INCORPORATED V18B 3020875