

AQUALON[®]

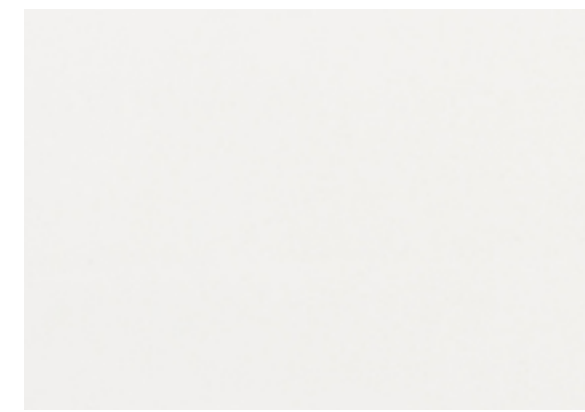
EDGE

Roll Width: 60 inches • Weight: 8.75 oz/yd²

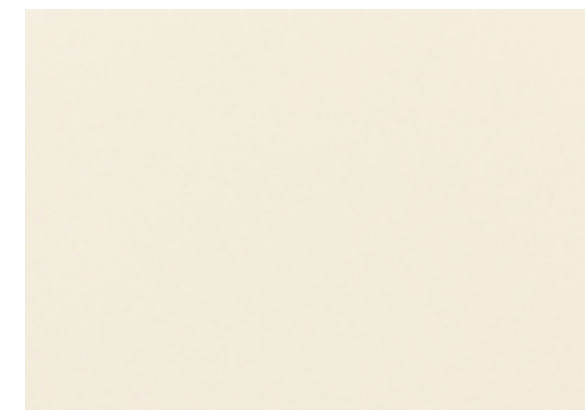
Aqualon[®] Edge is an exclusive marine fabric from Trivantage[®]. Featuring Perfecta Marine[®] technology, the material grants superior heat reduction, heat reflection, and UV capacity. For maximum performance, the canvas fabric resists peeling, cracking, fading, water, mildew, and rot.

7 Year Limited Warranty

Colors are representative only. Small variations in shade should be anticipated and are within commercial tolerances.



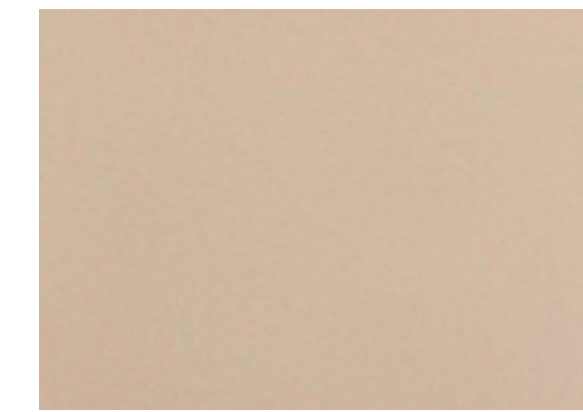
Alpine White
776217



Coastal Ivory
776208



Toast
776249



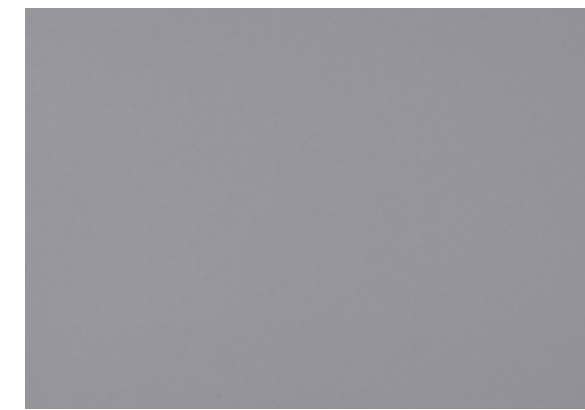
Oxford Tan
776225



Basic Beige
776268



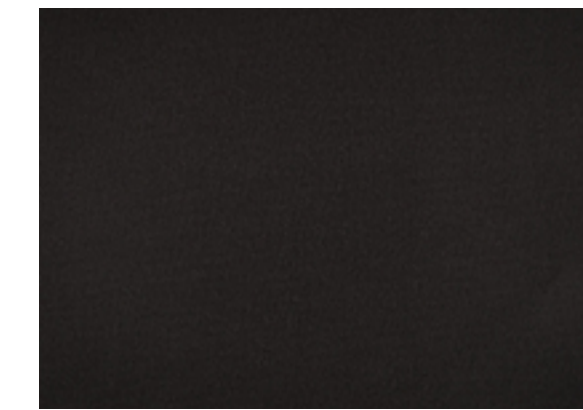
Classic Silver
776242



Slate Grey
776271



Charcoal Grey
776218



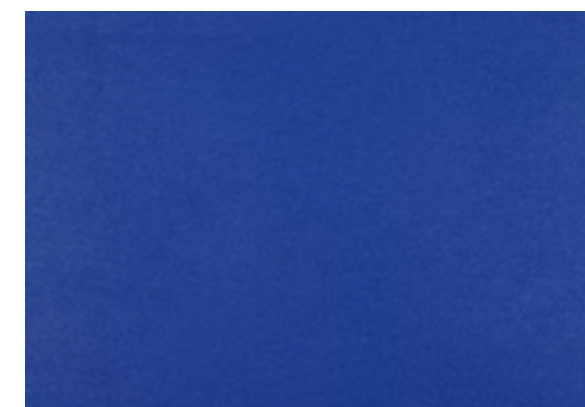
Black Onyx
776200



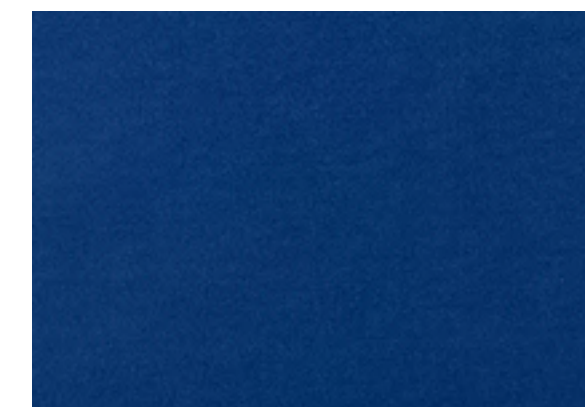
Mountain Taupe
776221



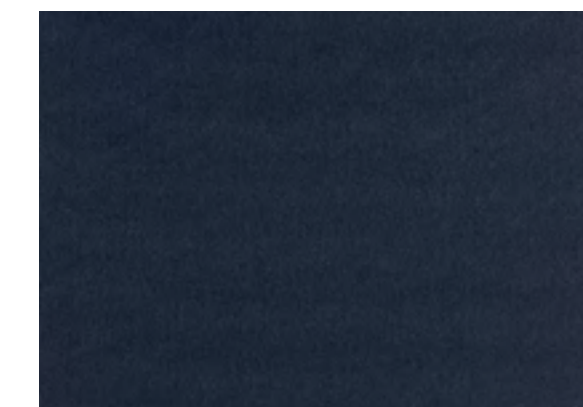
True Blue
776212



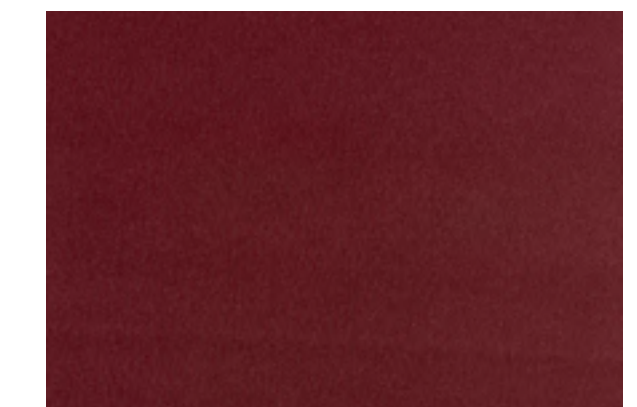
Indigo Blue
776269



Atlantic Blue
776244



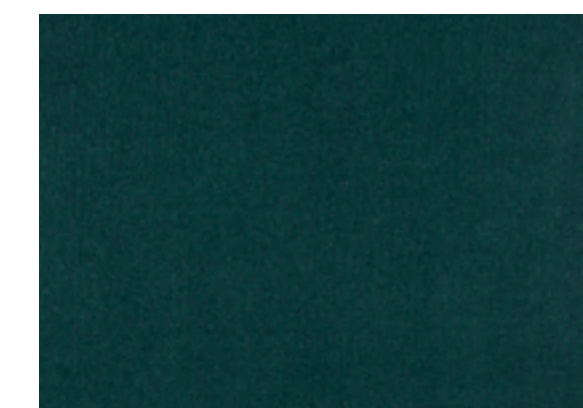
Nautical Navy
776228



Cabernet
776209



True Teal
776204



Ivy Green
776203



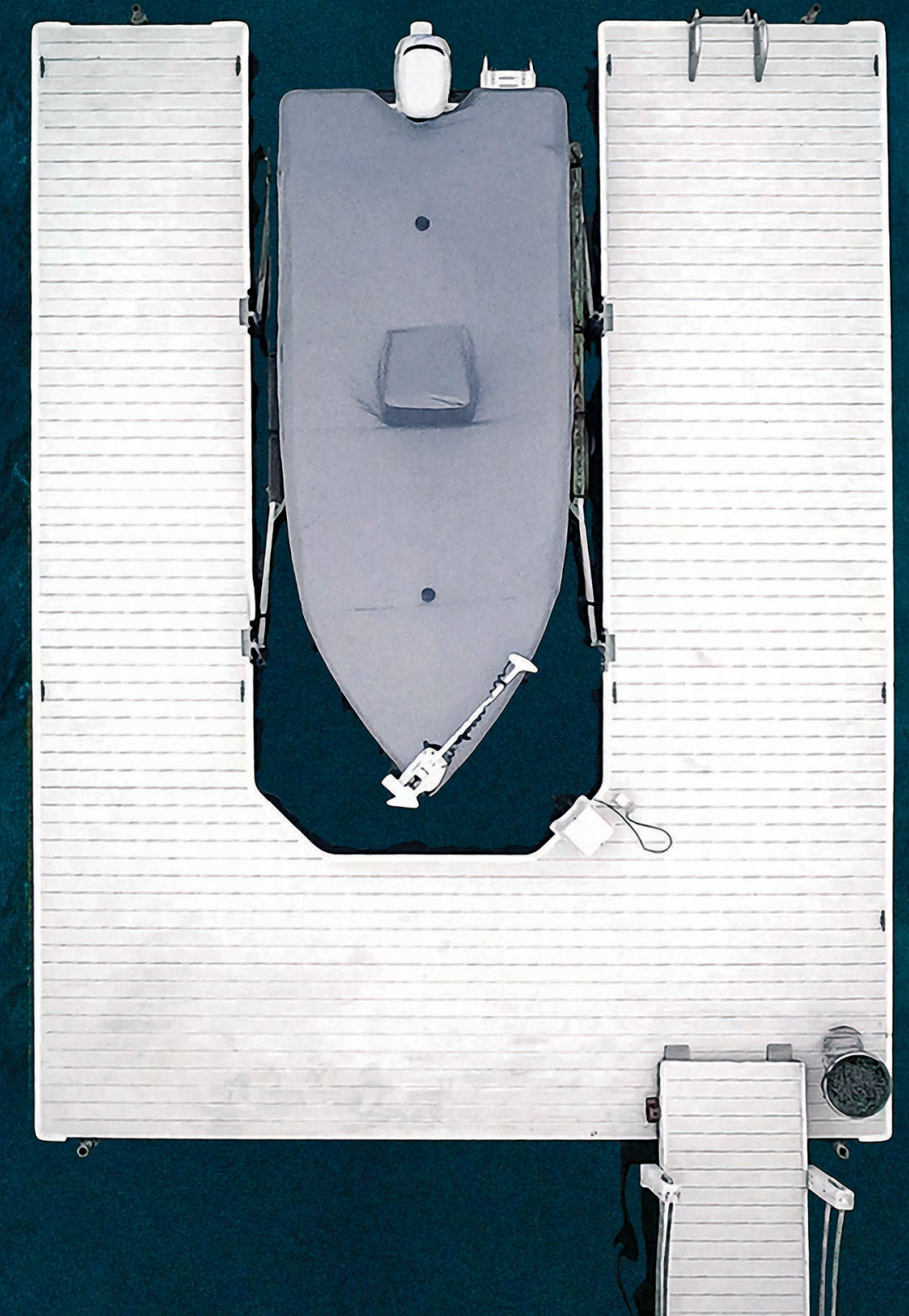
Cherry Red
776213

AQUALON[®]

EDGE

Typical Properties of Aqualon[®] Edge

TESTED PROPERTY	AQUALON EDGE
Width, inches: GSF Method	60
Weight, oz/yd ² : ASTM D 3774	8.75
Count: ASTM D 3775 Warp x Fill	96 x 33
Tensile, lbs: ASTM 5034 Warp x Fill	420 x 330
Tongue Tear, lbs: ASTM 022561 Warp x Fill	24 x 20
Chatillon Hand, lbf: ASTM D 4032	6.00
Height Hydrostat, cm: AATCC Method 127	90+
Spray Rating: AATCC Method 22	100
Bag Test, 8 & 24 hrs: GSF Method	Pass
Water Permeability After Cold Crack, cm: ASTM D 751	60+ With no visual signs of cracking
Heat Buildup Test (Temperature Reduction °F) ASTM D 4803	25°F



Need help?

Your customer care team is just a call or click away.

800.786.1876 ■ trivantage.com